

# ULTRA<sup>®</sup>

PAINT BOOTHS



GLOBAL  
FINISHING  
SOLUTIONS



# RECOGNIZED **QUALITY**

When you invest in capital equipment, you want a reliable, proven product from a company you can count on. Global Finishing Solutions is experienced at designing and building state-of-the-art paint booths and finishing equipment that exceed our customers' expectations. Body shops and collision centers of all sizes continue to come back to GFS for consistent, quality equipment every time.





# LEADING THE INDUSTRY

Since 1999, Global Finishing Solutions' proven and sought-after Ultra® Paint Booth line has been providing body shops and collision centers with high-performance finishing environments for painting automotive vehicles and parts. The Ultra Booth line features premium lighting, industry-leading controls, excellent airflow and advanced contamination control, enabling shops to achieve high-quality paint finishes in a bright, clean and ecologically friendly environment. GFS continually improves its products and components, guaranteeing quality and consistent results throughout the Ultra line.

# MATERIALS & CONSTRUCTION

Manufactured at our U.S. facility, Ultra Paint Booths are made with galvanized steel panels that are coated on both sides with a white, baked-on polyester topcoat, creating a rust-resistant cabin. Vertical wall panels reduce the number of joints and seams in the cabin's construction, leaving you with a stronger, longer-lasting booth with a smooth fit and finish.



Dual-Skin Insulated Panels



Single-Skin Panels



## PRE-ENGINEERED SOLUTIONS & **STANDARD OPTIONS**

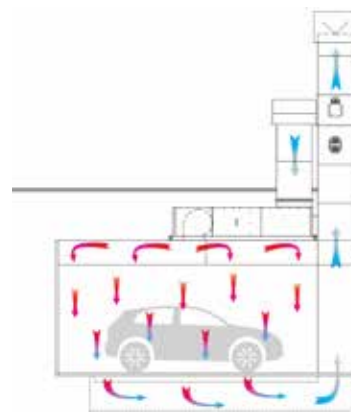
Ultra Paint Booths are expertly designed and engineered for superior performance and longevity. The Ultra Booth line offers many pre-engineered models and standard options that deliver consistent, quality results and feature shorter lead times.

Pre-engineered Ultra Paint Booths have achieved ETL and ETL-C listing to meet all applicable industry standards and facilitate successful installation and inspections.

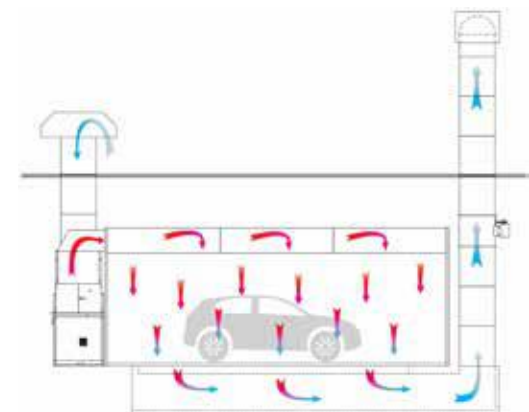


# DOWNDRAFT AIRFLOW

Generally accepted as the best airflow style, downdraft booths do an excellent job of controlling overspray and contamination. Air enters downdraft Ultra Paint Booths through GFS' patented Controlled Airflow Ceiling, a full-width filtered ceiling plenum. From there, air flows vertically over the vehicle and into the filtered exhaust pit in the floor.



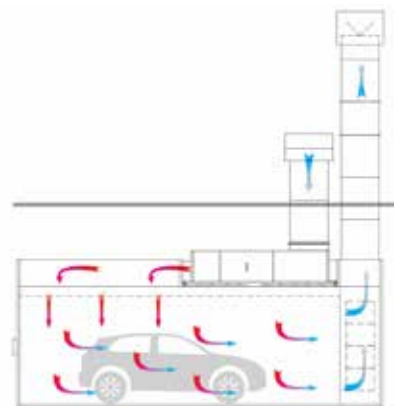
SpaceSaver Air Heater



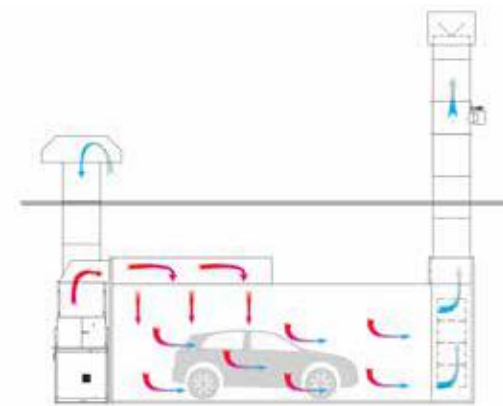
GUL2000/BT1200 Air Heater

# SEMI-DOWNDRAFT AIRFLOW

The semi-downdraft booth is a hybrid, combining features of both crossdraft and downdraft booths. Air is introduced into semi-downdraft Ultra Booths through the High-Performance Airflow Ceiling in the first 25-30 percent of the booth. It's then pulled through the working chamber, over the vehicle and into the filtered exhaust chamber at the booth rear.



SpaceSaver Air Heater



BT1200 Air Heater





# PREMIUM CONTROLLED AIRFLOW CEILING

Exclusive to GFS, the Controlled Airflow Ceiling's patented design maximizes the effectiveness of downdraft Ultra Paint Booths and increases the booth's overall spray zone with a full-width ceiling plenum. The main airflow zone in the Controlled Airflow Ceiling creates a protective envelope of air around the vehicle, while secondary airflow zones protect booth walls from overspray and keep contaminants out of paint jobs. Between these zones is a row of angled ceiling light fixtures, located directly above the vehicle for optimal illumination.



# HIGH-PERFORMANCE AIRFLOW CEILING

A classic design for semi-downdraft Ultra Paint Booths, the High-Performance Airflow Ceiling allows for even distribution of air throughout the booth, providing excellent air filtration and precise contamination control. Integrated hip-style ceiling lights illuminate the top and sides of the vehicle.



# INTUITIVE CONTROLS

GFS control panels are UL listed, and are designed, built and pre-tested at our facility to ensure trouble-free startups.

GFS offers two platform options for Ultra Booth controls – LOGIC and Engage®. With touch screen interfaces, energy-saving settings, spray temperature and booth mode monitoring, booth balancing, self diagnostics and airflow information, both platforms allow painters full control over the booth.



# CONTROL FEATURES

SmartFlash and SmartCure® technology – available exclusively with LOGIC controls – enables users to create different profiles for flashing or curing, making it easier for painters to set up each booth cycle for different coatings and vehicles, increasing cycle efficiency. This smart technology also helps reduce utility costs, with SmartFlash allowing up to 90 percent of the air to be recirculated during flash mode and SmartCure automatically reducing the air temperature once the metal reaches the desired temperature during the cure cycle.

Economy mode – standard on LOGIC and Engage controls – offers shops savings of up to 60 percent in electricity and 75 percent in fuel costs. This energy-saving feature automatically ramps the booth down and runs on idle when the booth is not in use.



LOGIC 4



LOGIC 3



Engage

# AIR HEATERS

GFS offers the flexibility of three air heater options – our best-in-class GUL2000, versatile BT1200 or low-profile SpaceSaver® – with the Ultra Paint Booth line.

GUL2000, our premium heater, includes features such as dual VFDs, direct-drive motors and an exclusive fan design for efficiency and reliability.

The highly versatile BT1200 heater is available in both recirculating and forced dry models, with dual VFDs and automatic pressure control.

A high-performance heater in a low-profile package, GFS' exclusive roof-integrated SpaceSaver heater compacts a highly efficient heat system into the same area as the paint booth plenum.

Without adding on to the paint booth's footprint, SpaceSaver provides high-efficiency heat and easier booth placement for space-conscious businesses.



SpaceSaver®



BT1200







# FULLY-LOADED **ULTRA**<sup>®</sup> XPI1

GFS' top-of-the-line booth, the Ultra XPI1 exceeds the automotive industry's standards for a premium paint booth. Incorporated into this booth is virtually every feature that sets GFS booths apart from the rest. No other spray booth can match the Ultra XPI1's level of production capability, performance, brightness, contamination control, ease of operation and energy efficiency.

- D downdraft airflow with GFS' exclusive Controlled Airflow Ceiling
- Intuitive LOGIC 4 controls with nine SmartCure and SmartFlash profiles
- Energy-saving economy mode
- Six-tube, T8 LED light fixtures
- Integrated AdvanceCure Blade<sup>®</sup> system
- GFS' top-of-the-line GUL2000 heat system
- Dual-skin insulated construction
- Four-wing product door with four observation windows
- 14-foot width and 9-foot ceiling height
- Available in 27- and 30-foot lengths





# VERSATILE **ULTRA**<sup>®</sup> X<sup>D</sup>

The Ultra XD paint booth leads the industry in versatility and performance. With a choice of high-efficiency heat systems, intuitive control panels, and downdraft or semi-downdraft airflow – along with superior lighting and contamination control – the Ultra XD will exceed your expectations.

- GFS' exclusive Controlled Airflow Ceiling in downdraft models or High-Performance Airflow Ceiling in semi-downdraft models
- SmartCure and SmartFlash profiles with the LOGIC controls
- Energy-saving economy mode
- Four-tube, T8 LED light fixtures
- Choice of GFS' GUL2000, BT1200 or SpaceSaver heat system (dependent on airflow)
- Dual-skin insulated construction
- Three-wing product door with three observation windows
- 14-foot width and 9-foot ceiling height
- Downdraft models available in 24-, 27- and 30-foot lengths
- Semi-downdraft models available in 27- and 30-foot lengths



# EFFICIENT **ULTRA**<sup>®</sup> XS

The Ultra XS paint booth delivers the quality and performance you've come to expect from GFS' Ultra Booths in a durable, single-skin design. Available with downdraft or semi-downdraft airflow, several heater and control options, and multiple size configurations, Ultra XS provides flexibility and efficiency to suit the needs of any shop.

- GFS' exclusive Controlled Airflow Ceiling in downdraft models or High-Performance Airflow Ceiling in semi-downdraft models
- Energy-saving economy mode
- Four-tube, T8 LED light fixtures
- Choice of GFS' GUL2000, BT1200 or SpaceSaver heat system (dependent on airflow)
- Single-skin construction
- Three-wing product door with three observation windows
- 14-foot width and 9-foot ceiling height
- Downdraft models available in 24-, 27- and 30-foot lengths
- Semi-downdraft models available in 27- and 30-foot lengths





GLOBAL  
FINISHING  
SOLUTIONS

ULTRA<sup>®</sup> XS

GLOBALFINISHING.COM





With a 12-foot-high ceiling designed for painting Sprinter vans, commercial vehicles and full-size pickup trucks, Ultra XL brings the performance you expect from the Ultra Paint Booth line to an extended range of vehicle sizes and heights. With premium brightness, contamination control, energy efficiency, and single- or dual-skin construction, Ultra XL is the perfect solution for oversized paint jobs.

# OVERSIZED **ULTRA**<sup>®</sup> XL

- Downdraft airflow with GFS' exclusive Controlled Airflow Ceiling
- SmartCure and SmartFlash profiles with LOGIC controls
- Energy-saving economy mode
- Four-tube, T8 LED light fixtures
- Choice of GFS' GUL2000 or BT1200
- Dual-skin insulated construction
- Four-wing product door with four observation windows
- 14-foot width and 12-foot ceiling height
- Available in 27- and 30-foot lengths





## BOOTH **LIGHTING**

Designed for optimal brightness, Ultra Booths feature strategically placed ceiling and sidewall light fixtures for precise lighting and minimal shadows. Manufactured at our U.S. facility for consistent quality, GFS light fixtures are ETL and ETL-C listed, and feature energy-efficient, T8 LED lamps. Many fixture and lamp options are available to customize booth lighting to meet your needs, including six-tube LED light fixtures.



# BOOTH DOORS

GFS doors and windows are designed with durability and flexibility in mind. Each pre-engineered Ultra Paint Booth includes a three- or four-wing product door and one personnel door. Depending on the layout of your booth and desired process flow, optional configurations – such as drive-thru doors – may be right for you. Observation windows come standard on all product and personnel doors.





## ACCELERATED **CURING**

Increasing productivity and efficiency, AdvanceCure Systems cut the time needed to cure paint in half, saving time and energy compared to traditional curing methods. During the cure cycle, this turbulent airflow dramatically improves the heat transfer from the air to the painted panels, and provides even heat distribution over the entire vehicle.

AdvanceCure models are available in Blade® or nozzle design, and can be integrated directly into your Ultra Booth or retrofitted at a later time.

# CODE COMPLIANT & ETL LISTED

Our Ultra line is designed to meet all industry safety standards and comply with applicable International Fire Code (IFC) and NFPA codes for proper airflow and paint booth use. All pre-engineered Ultra Paint Booth models have achieved ETL and ETL-C listing, validating performance and ensuring worry-free planning and installation.

The ETL or ETL-C mark on your booth is proof of compliance with North American safety standards, including NFPA, OSHA, UL and more. A UL or CUL listing verifies that Underwriters Laboratories has tested GFS' product and determined that it meets UL's stringent requirements. GFS works with these third-party agencies to ensure the safety of our Ultra Paint Booths and their components.



# CUSTOM OPTIONS

What sets GFS apart from the competition is our ability to provide customers with highly specialized products. As one of the world's leading manufacturers of paint booths and finishing equipment, we have the resources and expertise to design technologically advanced paint booths to meet your specific requirements.

Custom engineered solutions such as side-load rail and dolly systems and roll-up doors provide the same exceptional quality and performance you expect from GFS in a truly one-of-a-kind booth for painting your automotive vehicles and parts.



# ADDITIONAL PRODUCT OFFERINGS

## REVO SYSTEMS

Improve your shop's efficiency and reduce rework with REVO Accelerated Curing Systems. The revolutionary, electric infrared technology cures filler and coatings quickly from the inside out. With a variety of products, including handheld, mobile units and booth-integrated options, there's a solution to start saving you time and money immediately.

## PREP STATIONS

Prep parts and vehicles in a well-lit, contaminant-free environment with GFS' Excel Workstation. Available in multiple length, width and height options to suit your shop layout – and designed to be freestanding or suspended from your shop's ceiling – Excel Workstations provide a controlled, all-in-one work environment for sanding, priming and limited painting.

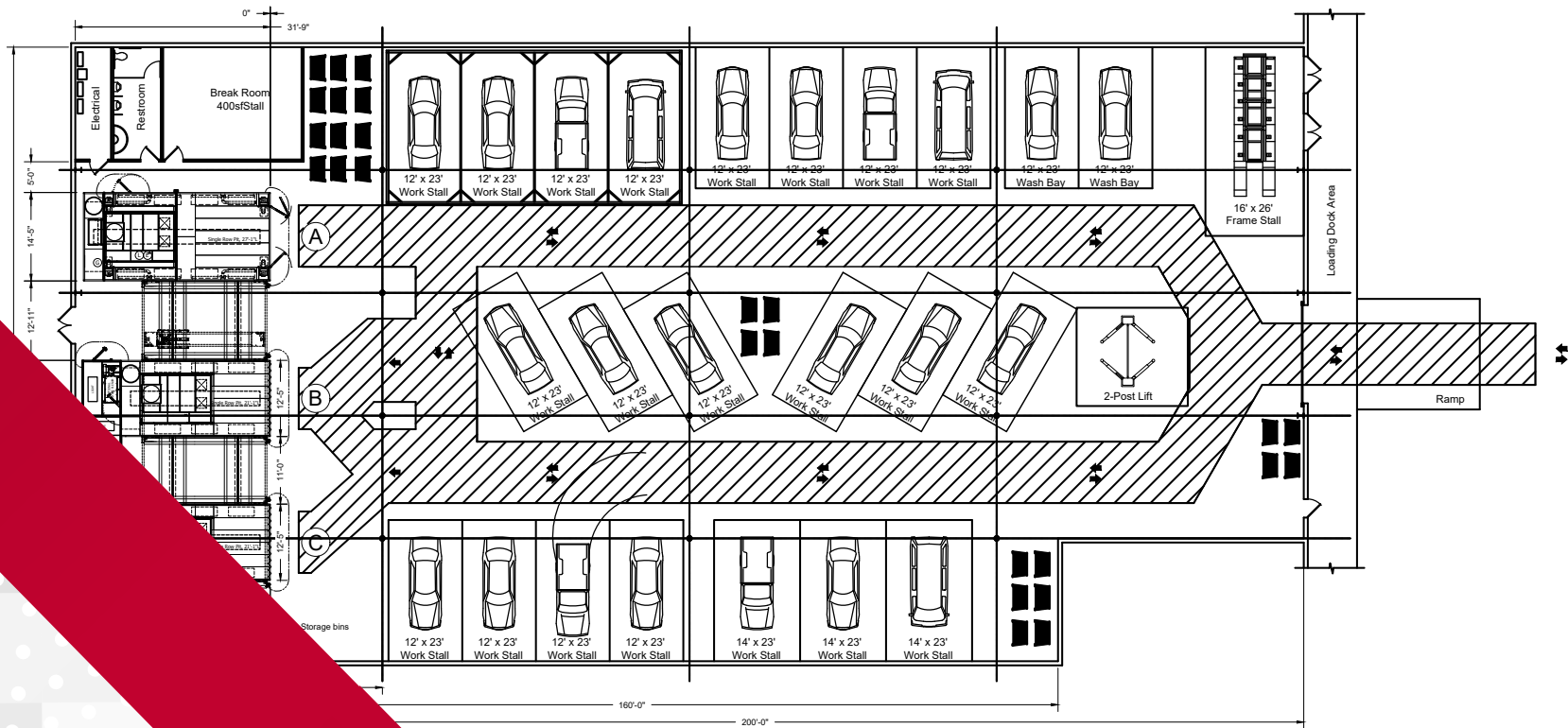
## BOOTH ACCESSORIES

Make your life easier with paint booth accessories like the Rotating Access Table and Parts Hanger System. The Rotating Access Table installs in the wall between your paint booth and mix room, giving you easy access to pre-mixed paint and supplies, without having to leave the booth. The flexible Paint Booth Parts Hanger System from GFS enables you to maximize productivity in your paint booth.



# MAXIMIZE PRODUCTIVITY & THROUGHPUT

In addition to offering a complete line of premium paint booths and finishing equipment, we offer customized solutions to meet your business' needs. Let us help you develop shop layouts that maximize productivity and train your technicians to improve your finishing processes.



# SERVICE & SUPPORT

## YOU CAN COUNT ON

We stand by our products and believe that excellent service shouldn't end at the sale. You can rely on Global Finishing Solutions and our experienced distribution network for lifelong support and service of your paint booth. GFS' unmatched Technical Services department and a local distributor are available to assist you with any emergency repairs or maintenance issues to ensure your booth is always running in peak condition. Preventative maintenance plans are also available to extend the life of your equipment.



globalfinishing.com | 800-848-8738

©2020 Global Finishing Solutions. All Rights Reserved.  
ULTRA05202020



GLOBAL  
FINISHING  
SOLUTIONS