

Installation Manual



Ultra[®] CTOF Semi-Downdraft Booth with BT Air Heater (Dual-Bay)



Document Number: 239-143 rev 1

Read and keep this manual for future reference.

All personnel operating the equipment described in this manual should review and understand all instructions before use.

Contents

Introduction	3
About Global Finishing Solutions LLC	3
Target audience	3
Contacting Global Finishing Solutions	3
Conventions used in this manual	4
Safety notices	4
Information notices	4
Navigation	5
Safety guidelines	6
General safety	6
Booth safety	8
Booth description	11
Accepting delivery of your booth	12
Preparing for installation	13
Gathering required documentation	13
Confirming site requirements	14
Confirming booth layout	15
Assembly Instructions booklet	17
Page elements	17
Page types	19
Tools and equipment	22
Required tools	22
Recommended equipment	23
Installation best practices	24
Unpack in stages	24
Sort parts by size	25
Remove protective coating	26
Follow assembly guidelines	26
Installation procedure	27
Booth installation sequence	27
Perform commissioning and startup	31

Introduction

About Global Finishing Solutions LLC

Leading the Industry in Paint Booth and Finishing System Technology

With decades of experience, Global Finishing Solutions is the leading manufacturer of paint booths and finishing systems for many industries, including automotive refinish, aerospace and defense, industrial manufacturing, woodworking, and large equipment. By combining high-quality components, strong relationships with paint manufacturers, and our experienced distribution network, GFS provides the best equipment and support to set your business up for success.

Target audience

This document is intended for use by trained, experienced paint booth installers. If you have questions about the installation procedure described in this manual, contact GFS as described below.

Contacting Global Finishing Solutions

General information

- Toll-free: 800-848-8738
- Fax: 715-597-2193
- Email: info@globalfinishing.com
- Online: www.globalfinishing.com

Technical support

- Toll-free: 800-848-8738; select option 8
- Fax: 715-597-8818
- Email: techservices@globalfinishing.com

Parts and filters

- Toll-free: 800-848-8738; select option 2
- Fax: 888-338-4584
- Email: parts@globalfinishing.com




Conventions used in this manual

This section describes how information is presented, organized, and referenced within this manual.

Safety notices

This manual uses the following standards to identify conditions related to safety hazards and equipment damage.

Table 1: Safety notices

Symbol	Description
 DANGER	Indicates an imminent hazard that will result in death
 WARNING	Indicates a hazard that can result in serious personal injury or death
 CAUTION	Indicates a hazard that can result in personal injury
NOTICE	Indicates a situation that can result in equipment or property damage, but poses no risk of personal injury

Information notices

In addition to the safety notices described above, this manual uses a boldface keyword to identify certain other types of information.

Table 2: Information notices

Keyword	Description
Note	Denotes general information that provides additional context or guidance
Important	Denotes information to which you should pay special attention
Reference	Directs you to related content in a separate document
Prerequisites	Specifies other tasks that must be completed or conditions that must exist before you perform the current task
Scope	Describes limitations to the current task or conditions under which the task applies or does not apply to the installation procedure

Navigation

Within the manual, the installation procedure is organized into *tasks* and *steps*:

- **Tasks tell you what to do.** Tasks are numbered sequentially throughout the procedure, beginning with 1. If a task has sub-tasks, the sub-tasks are numbered relative to the parent task. For example, if task 4 has sub-tasks, those sub-tasks will be numbered 4.1, 4.2, 4.3, etc.
- **Steps tell you how to perform a task.** In some cases, tasks are broken down into steps that provide more detailed guidance. When present, steps are numbered sequentially within a task, always restarting at 1 in the next task.

Throughout the procedure, **cross-references** may direct you to another section of the procedure.

- When a cross-reference specifies a *task* (for example, “as directed in task 7” or “continue to task 4.2,” etc.), the referenced item is a task or sub-task.
- When a cross-reference specifies a *step* (for example, “repeat step 2” or “skip step 7,” etc.), the referenced item is located in the same group of steps where the cross-reference appears, unless otherwise specified.

Safety guidelines

Follow all safety guidelines when assembling, operating, or servicing this product.

General safety

⚠ WARNING

There are inherent hazards associated with the operation and service of this equipment. For your personal safety, observe all safety information. Failure to observe these safety practices can result in personal injury or death.

⚠ WARNING

Operation and maintenance of this product must be performed properly by qualified personnel who observe the warnings in all documentation and notes provided with and on the product.

⚠ WARNING

Follow all general standards for installation and safety for work on installations. Follow all good practices for the proper use of lifting tackle and equipment. The use of protective equipment such as safety goggles and protective footwear must be considered.

⚠ WARNING

All persons who will operate, service, inspect, or otherwise handle this product must read and understand the safe operating practices, safety precautions, and warning messages in this documentation.

⚠ WARNING

Comply with OSHA guidelines and with all local electrical, safety, and fire codes and standards.

⚠ WARNING

All field wiring provided must comply with local codes or, in the absence of local codes, the National Electrical Code (NFPA 70).

⚠ WARNING

All wiring must conform to the latest NEC codes 500, 501, 502, 505, 516.

⚠ WARNING

Electrical installation should be completed by a qualified electrician. Installation must meet all applicable national, state, and local electrical codes.

⚠ WARNING

Ensure that all electrical components are grounded to a central ground.

⚠ WARNING

Disconnect and lock out the main electrical service before installing, adjusting, or servicing the product.

⚠ WARNING

Guards and covers that prevent contact with electrically energized or moving parts are required and must not be removed or left open during operation.

⚠ WARNING

Local fire and building codes require fire protection. Check with local inspector authorities for requirements.

⚠ CAUTION

Read and save these instructions before attempting to assemble, install, operate, or maintain the product described. Protect yourself and others by observing all safety information. Failure to comply with instructions could result in personal injury and/or property damage. Retain these instructions for future reference.

⚠ CAUTION

This manual contains statements that relate to worker safety. Read this manual thoroughly and comply as directed. Operate this equipment in accordance with the guidelines set forth in this manual. It is impossible to list all potential hazards of this equipment. Instruct all personnel involved with this equipment in the safe conduct and operation of the system. GFS recommends that only qualified personnel operate and maintain this equipment.

⚠ CAUTION

Safety signs, panels, and labels that are normally affixed to the product must be replaced immediately if illegible or missing.

⚠ CAUTION

New or replacement parts that are installed during repair or maintenance must include all safety signs, panels, and labels as specified by the manufacturer. These must be affixed to the new or replacement parts as specified by the manufacturer.

⚠ CAUTION

Where applicable, use earplugs or take other safety measures for hearing protection.

NOTICE

The product must be installed and serviced only by a trained, qualified service technician. Incorrect installation may void the warranty.

NOTICE

If you have questions about the warranty, please contact your distributor prior to contacting GFS.

Booth safety

DANGER

Ceiling panel load capacity for installation and maintenance: You must use temporary platforms that span at least two structural frames for maintenance. **Do not walk on or apply any pressure to lights or explosion relief panels.**

WARNING

All equipment must be operated and maintained in accordance with local, state, and federal (OSHA) requirements governing occupational safety, fire protection, and spray booth operations. Operators must read and understand GFS and included independent equipment and/or component manufacturer's instructions prior to use. **Disclaimer:** GFS is not responsible for any injury, illness, or property damage that results from not abiding by local, state, or federal (OSHA) requirements that govern occupational safety, fire protection, and spray booth operations. GFS is also not responsible for any injury, illness, or property damage that is the result of not adhering to GFS and/or independent equipment/component operating, service, maintenance, and/or installation requirement's or directives.

WARNING

Install the booth in compliance with locally enforced codes and standards.

WARNING

A fire suppression system is required by the International Fire Code and NFPA 33. A fire suppression system is not supplied with this booth.

WARNING

Do not allow overspray to accumulate on the inside of the paint booth walls. When overspray accumulates, remove it as soon as possible to prevent a possible fire hazard. Use a non-ferrous, non-sparking scraper to eliminate any possibilities of igniting combustible material.

WARNING

Do not leave piles of paint sweepings in the booth as it creates a possible fire hazard.

WARNING

Treat used arrestor filter pads and any other paint-contaminated items as flammable products and dispose of them safely.

WARNING

Improper disposal of used arrestor filter pads may cause spontaneous combustion. You must consult local authorities for proper storage and disposal requirements. Guidelines include:

- Immediately remove all arrestor filter pads from the booth.
- Discard arrestor filter pads to a safe, well-detached location, or place them in a water-filled metal container to prevent a possible fire hazard.
- Disposal varies depending on the type of paint that is being captured. Consult local authorities for storage and disposal requirements.

⚠ WARNING

Duct the exhaust air from the fan away from the working environment to the outdoors. Do not operate the paint booth unless exhaust has been ducted properly.

⚠ WARNING

Isolate the outdoor vent from air-conditioning intakes, windows, and any other equipment that may re-circulate the exhaust indoors.

⚠ WARNING

Turn on the exhaust fan before using the spray booth. Ensure that the exhaust fan is operating correctly before entering the booth.

⚠ WARNING

Check local codes to see if a booth interlock is required. A booth interlock prevents the spray devices from operating unless the booth fan is operating.

⚠ WARNING

Some spray activities may require the use of respiratory protection.

⚠ WARNING

Use an OSHA-approved paint spray respirator when spraying in the booth.

⚠ WARNING

This equipment is designed for the removal of particulate matter only. Reduction of volatile organic compounds (VOCs) requires either coating reformulation or optional, additional equipment.

⚠ CAUTION

Become familiar with all controls before operating or servicing this booth.

⚠ CAUTION

Proper door alignment is critical to the operation of the booth. Ensure that there is equal space around the doors. Move the bottom of the door jamb to the left or right or in and out until the doors are sealed and plumb.

⚠ CAUTION

If this installation includes pumps or compressors, install and connect those devices in accordance with the manufacturer's documentation.

NOTICE

GFS recommends storing crates indoors pending installation. If you must store crates outside, protect crates and their contents from moisture to prevent damage to equipment.

NOTICE

Install the control panel per NFPA 70 and local codes and standards.

NOTICE

Failure to anchor the booth to the floor properly may result in structural damage.

Booth description

GFS' Ultra Closed-Top Open-Front (CTOF) Booth line provides a versatile, end-to-end finishing environment that allows vehicles to be filled, primed, sealed, painted, and cured in one location.

In the semi-downdraft booth, air is introduced to the booth through the ceiling in the first 25-30% of the booth. Then the air is pulled across the "working depth," over the vehicle, and then into the filtered exhaust chamber at the booth rear (Figure 1).

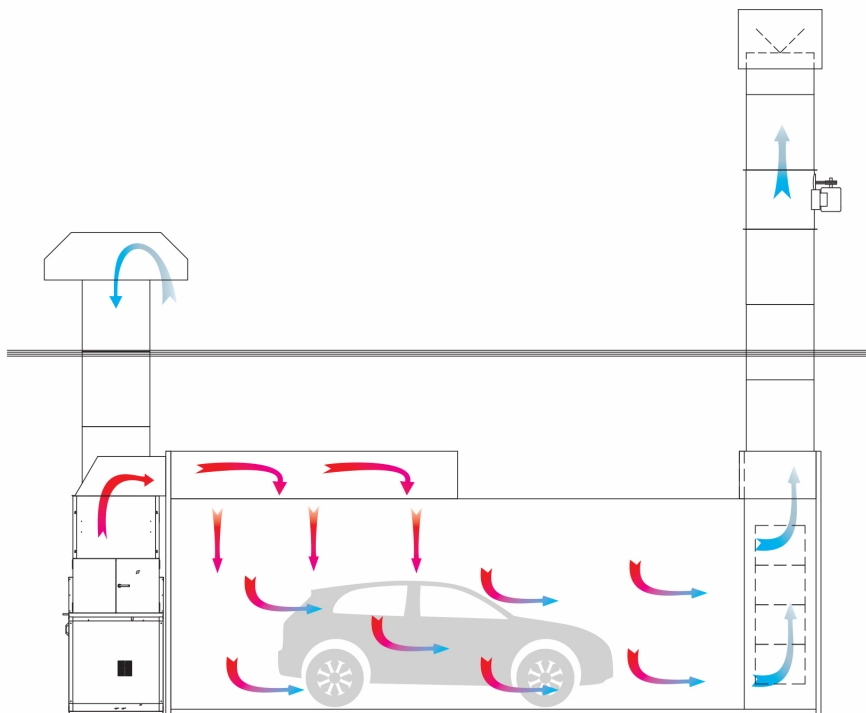


Figure 1: Airflow in a semi-downdraft booth with a BT air heater

Accepting delivery of your booth

The booth is delivered unassembled in multiple crates.

Upon delivery:

- Count the number of crates you received and compare that number to the expected number per the Bill of Lading.
- Inspect each crate for any signs of damage during shipment. If you see shipping damage, note it on the freight carrier's paperwork; failure to do so may result in claim denial.

If any crates are missing or damaged, contact Global Finishing Solutions at 800-848-8738 and select option 8 to speak to a Technical Services Representative.

NOTICE

GFS recommends storing crates indoors pending installation. If you must store crates outside, protect crates and their contents from moisture to prevent damage to equipment.

Preparing for installation

This section describes steps you can take to help ensure an efficient installation.

Gathering required documentation

Ensure that you can locate these documents and that they are available during the installation procedure.

Note: Table 3 lists the location of the hard-copy documents that ship with the booth. The Installation Manual, Product-Specific Guide, Assembly Instructions booklet, and the appropriate control panel operator guide are also provided electronically to distributors via box.com.

Table 3: Additional documents related to booth installation

Document	Description	How provided
Product-Specific Guide	Includes information about the booth order, configuration, and components.	Ships in the “Miscellaneous” box
Assembly Instructions booklet	Detailed drawings and instructions for assembling this particular booth	Ships in the “Miscellaneous” box
Electrical Drawings	Wiring diagrams for electrical components	Ships inside the air heater control panel
Control panel operator manual	Setup and operation instructions for the air heater control panel and the accompanying operator interface terminal; either: <ul style="list-style-type: none"> • Engage[®] Operator Manual • LOGIC 3 Operator Manual • LOGIC 4 Operator Manual 	Ships inside the air heater control panel
Air heater owner’s manual	Installation, operation, and maintenance instructions for the air heater; either: <ul style="list-style-type: none"> • Ultra/BT Series Owner’s Manual (for GUL and BT air heaters) • SpaceSaver[®] Series Owner’s Manual 	Ships inside the air heater control panel
Final Commissioning Document (D0420)	Includes all tasks related to booth startup and commissioning	Ships inside the air heater control panel

Confirming site requirements

Before beginning the installation procedure, confirm that the site where the booth will be assembled meets the following requirements:

- The floor where you will assemble the booth is level. (If the floor is more than 1 inch out of level, you must shim or grout the floor to avoid any misalignment.)
- The area is large enough to allow a minimum of 3 feet (914 mm) of clear space on all four sides of the booth, taking into account the additional space needed for the air heater. Some exceptions may apply. Check local codes and refer to NFPA 33 guidelines to determine particular space allowances.
- There is sufficient overhead clearance for the exhaust unit and exhaust ductwork in the area where the booth is to be located.
- A licensed electrician who has experience with power wiring and control wiring has verified electrical requirements of the booth are met. (The power specification is included with the submittal or provided at delivery.)
- The appropriate miscellaneous hardware kits are provided with the equipment.

Confirming booth layout

Before beginning the installation procedure, review the booth configuration and layout with the end user. Be sure you understand what options this booth includes and how the end user wants to arrange the booth.

The GA page of the Assembly Instructions shows one *possible* booth layout. However, end users might want their booths arranged differently. **During installation, you must make the appropriate adjustments to the instructions to accommodate the actual booth layout.**

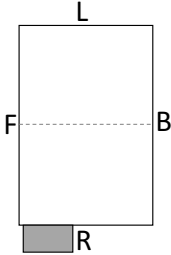
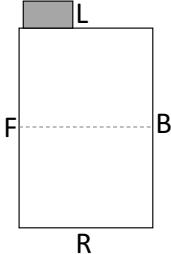
For best results, review the GA page of the Assembly Instructions drawing with the end user and discuss the items listed below:

- Where does the end user want to place the air heater? (See Table 4.)
 - Right side, toward front of booth
 - Left side, toward front of booth
- Is this booth a drive-through booth (a booth with a product door or curtain on each end) or a solid-back booth?
- For a drive-through booth:
 - Does the front of the booth have a frontal curtain or 3-slab product door?
 - Does the rear of the booth have a curtain or 3-slab product door?
- Where does the end user want to locate the personnel door?
 - On the left or right side of booth?
 - At which panel position?
- Where does the end user want to place the operator interface terminal (also known as the *HMI*)?
 - On an exterior booth wall? (If so, specify which.)
 - On a nearby wall? (If so, determine distance and orientation relative to booth.)

Note: Per NEC, the operator interface terminal cannot be located within 3 feet of any door opening. Refer to the HMI Installation page of the Assembly Instructions for more information about placement restrictions.

- *If applicable:* Within the booth's interior, how does the end user want to arrange the wall lights?
- If the booth includes standard options and accessories, where should those items be located? (Examples include additional light fixtures, rotating access tables, observation windows, parts hangers, additional personnel doors, etc.)

Table 4: Air heater positions

Air heater position relative to booth	
Layout	Description ¹
Right-front	Right side, toward front of booth 
Left-front	Left side, toward front of booth 

1. The diagram indicates the general position of the air heater (shaded) relative to the paint booth. Diagrams are not to scale. Booth walls are designated as follows: F = Front; B = Back; L = Left side; R = Right side

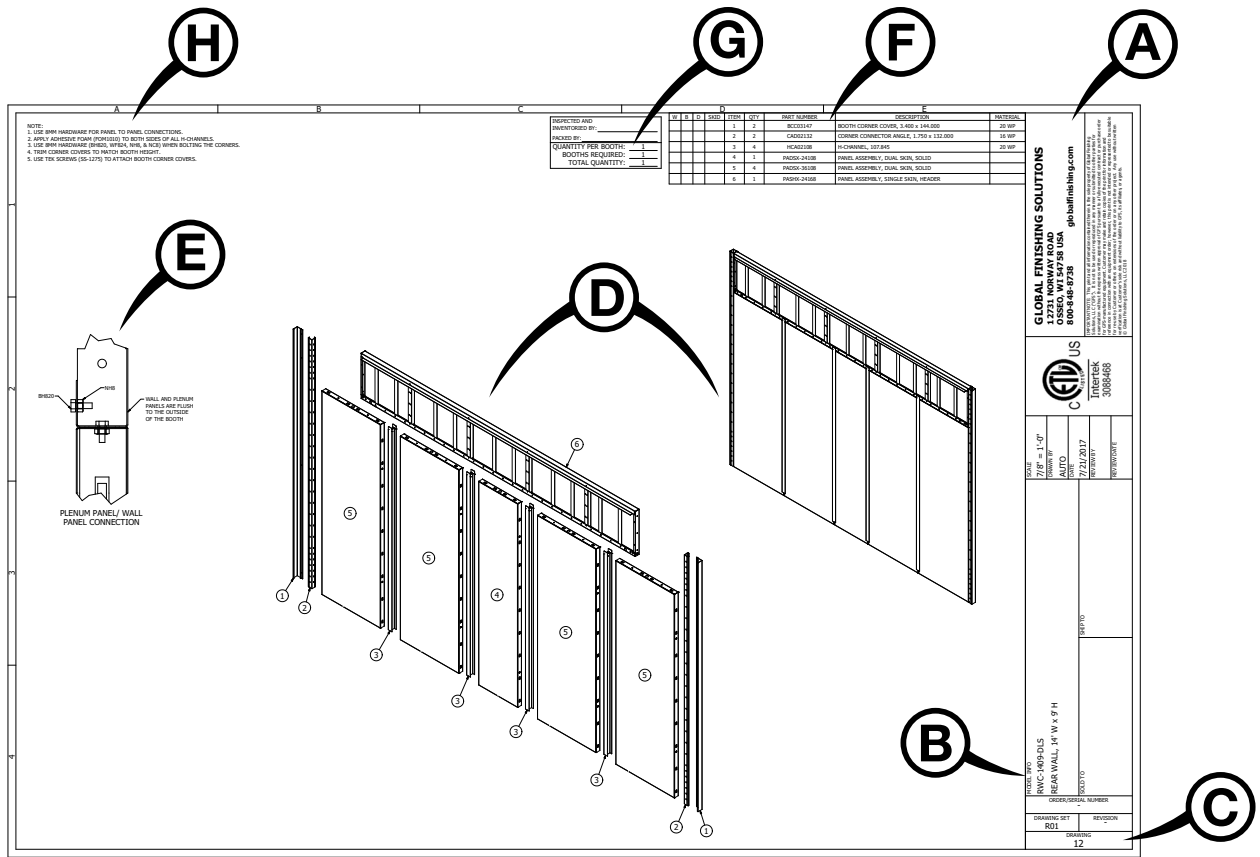
Assembly Instructions booklet

Use this Installation Manual in conjunction with the provided Assembly Instructions booklet (sometimes called the “AI booklet” or the “Assembly Instructions”). The Assembly Instructions booklet defines the overall layout and detailed structure of your particular booth. It includes exploded-view diagrams and parts lists for each section (or *subassembly*) of the booth.

Page elements

Pages within the Assembly Instructions booklet contain the following elements:

- **Title block:** The title block is located along the right edge of each page. Within the title block, note the following fields:
 - **Model Info:** Contains text that identifies each page within the Assembly Instructions booklet, such as “Overall Assembly,” “Front Wall,” and so on. When the installation instructions refer you to a specific page within the Assembly Instructions booklet, look for that text in the Model Info field. (For a description of the various page types that might be included in your Assembly Instructions booklet, see “Page types” on page 19.)
 - **Drawing:** This field contains an identification label or number, as follows:
 - The General Arrangement page contains a text label (“GA”).
 - The pages for the main components of the booth are numbered sequentially. If a given component requires more than one page, the sheet number includes a “.#” suffix (for example, 4.1 and 4.2).
 - Addendum pages for accessories or other smaller components may be included after the main drawings. Addendum drawings include an “A-” prefix and are numbered sequentially beginning with “A-1” (e.g., A-1, A-2, A-3, etc.).
- **Drawings:** The main area of each page can contain any or all of these types of drawings:
 - An exploded and/or assembled view of the overall sub-assembly
 - Additional views or “Detail” drawings
- **Bill of Materials:** Any page that includes a drawing with labeled parts also includes a table that lists each item number with its corresponding part number and quantity.
- **Quantity per Booth:** Pages that show a subassembly of the booth (for example, a door frame) also list the quantity of that subassembly per booth.
- **Notes:** Pages of the Assembly Instructions booklet often contain notes that provide information about how to install that section of the booth.



- A:** Title block
- B:** Model Info
- C:** Drawing # or ID
- D:** Drawings: Main view (exploded and/or assembled)
- E:** Drawings: Detail view
- F:** Bill of Materials
- G:** Quantity per Booth
- H:** Notes

Page types

Note: The Assembly Instructions booklet for a given booth contains *only* the pages from Table 5 that apply to that particular booth. It also contains *addendum pages* for optional booth accessories, if applicable. The Table of Contents on the cover sheet of the Assembly Instructions booklet lists the specific pages included in that booklet.

Table 5: Page names in the Assembly Instructions booklet

Page name	Description
AdvanceCure	Provides instructions for installing the optional GFS AdvanceCure system. Note: This page applies only to booths that include the GFS AdvanceCure system.
AdvanceCure Intake & Discharge Cover Kit	Shows how to install cover plates at locations where the optional GFS AdvanceCure system integrates with the booth. Note: This page applies only to booths that do not include the GFS AdvanceCure system.
Air Heater	Provides instructions for installing the air heater base and burner. Provides instructions for assembling the air heater.
Air Inlet Hood	Shows how to assemble the air inlet hood that goes on top of the intake stack.
Booth Caulking Guide	Provides instructions for applying caulk to the booth.
Corner Light Harness	Shows how to run the wire harness cables to the optional corner light from the control panel.
Corner Light Installation	Shows how to install optional corner lights.
Discharge Hood Assembly	Shows how to assemble the discharge hood that connects the air heater to the booth plenum.
Door Frame	Shows how to install a product door frame. Note: A Door Frame page is classified as “3 Slab Door” or “4 Slab Door,” depending on the type of product door that will be installed in that frame.
Door Slab	Shows how to install a product door and its associated hardware. Note: A Door Slab page is classified as “3 Doors” or “4 Doors,” depending on how many door slabs comprise that product door.
Filter Ceiling	Shows how to install the filter ceiling
Floor Profile	Shows how to install the floor channel and floor-leveling components. Shows how to install the floor channel and floor-leveling components; also specifies where to place the rear-most columns for the air heater frame.
Floor Profile Tek-Screw Detail	Shows how to secure the wall panels to the floor profile.

Table 5: Page names in the Assembly Instructions booklet (Continued)

Page name	Description
Front Wall	Shows an exploded view of a drive-through end wall (a wall that accepts a product door). Note: A Front Wall assembly is always installed at the front of the booth. For drive-through booths (which have a product door at each end), a Front Wall assembly is <i>also</i> installed at the rear of the booth. Note: A Front Wall page is classified as “3 Slab Door” or “4 Slab Door,” depending on the type of product door that will be installed at that end.
GA	Provides a top view of the booth as well as front, side, and rear elevations. Note: The GA page shows the standard booth arrangement and is provided for reference only; it is <i>not</i> customized for the booth you are building. Note: The actual placement of some components (such as the air heater, personnel door, wall lights, etc.) might be different than shown on this page. Always consult with the end user for placement details , as described in “Confirming booth layout” on page 21.
HMI Installation	Provides instructions for installing the operator interface terminal.
Install Curtains	Shows how to install curtain mounting racks.
Locking Rod	Shows how to install the locking rod assembly for product doors.
Label Placement Instructions	Shows where to place various booth labels, including exit, maintenance, and safety labels.
Light Fixture Details	Shows how to install booth lights.
Overall Assembly	Shows an exploded view of the entire booth; identifies the major components and sub-assemblies of the booth.
Personnel Door	Shows how to install a personnel door and its associated hardware.
Rear Wall	Shows an exploded view of a solid end wall. Note: This page applies only to booths that are not drive-through booths.
Reflector Light Fixture	Shows how to install the optional light-reflector kit.
Roof Panels	Shows how to install the roof panels.
Roof Support Assembly	Shows how to install the roof support assembly.
Side Wall	Shows an exploded view of a side wall. Note: The Assembly Instructions booklet always contains two Side Wall pages: one that includes a personnel door, and one that does not include a door.
Structural Frame Assembly	Provides instructions for installing the booth frames.

Table 5: Page names in the Assembly Instructions booklet (Continued)

Page name	Description
Temp Sensor & Diffuser/Baffle	Provides instructions for installing the temperature sensor and a diffuser (for an air heater with side-discharge into the booth) or a baffle (for an air heater with down-discharge into the booth).
Wire Harness	Shows how to run the wire harness cables for the lights to the air heater control panel.

Tools and equipment

Having the items listed below helps ensure that the installation proceeds efficiently.

Required tools

- Screwdrivers
- Wrenches and socket set
- Hammer and mallet
- Ladders (6-foot and 8-foot)
- Load bar that can extend to at least 9 feet (108 inches)
- Filter-insertion tool (metal pizza cutter; approximately 3-inch to 4-inch diameter)
- Drift pins (two per person; 1/8-inch to 5/8-inch taper)
- Caulk gun
- Impact driver and drill
- Unibit or step drill bits
- Chalk and/or felt-tip marker (for marking initial measurements on floor)
- Chalk-line tool
- 4-foot box level
- Laser level (*Suggested: Quad laser or rotary laser level*)
- Tape measures (35-foot and 100-foot)
- Tin snips
- Duct crimping tool
- Torque nut runner
- Reciprocating saw
- *Optional:* Torch and welder in case modifications need to be made on site
- Tools required for decal placement:
 - Stiff squeegee
 - Spray bottle with soapy-water mixture
 - Paper towels
 - Scissors
 - Masking tape
 - Marker

Recommended equipment

- Two or more sawhorses
- Two 26-foot T scissor-lift platforms
- Warehouse forklift with 5000-pound lift weight and a maximum lift height higher than 16 feet

Note: Lifts and cranes are not required, but they may improve both the safety and speed of booth installation.

Note: The end user is responsible for providing any lifts and/or cranes. Alternatively, the end user can coordinate with the installer so the installer can rent those items before starting the work.

Installation best practices

This section describes best practices that apply to all booth installations.

Unpack in stages

As you begin each section of the installation procedure, unpack the crate(s) that contain the parts for that section. In general, parts that go together during assembly are packed on the same skid.

Note: For faster unpacking, use a reciprocating saw to cut the crates.

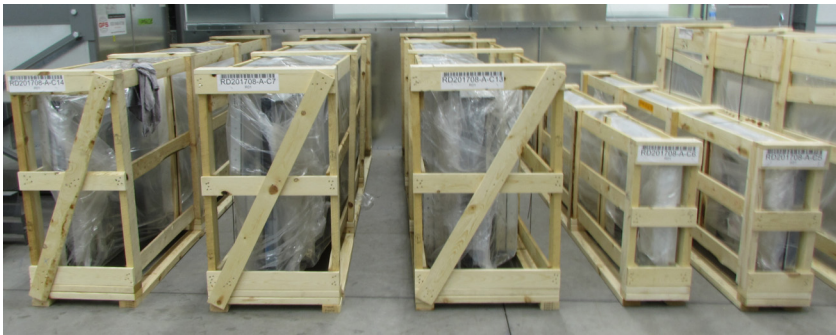


Figure 2: Crates awaiting unpacking

A packing list is attached to each crate. As you unpack a crate, compare all the parts with that crate's packing list to check for shortages or losses in transit. Also check parts for any damage that might have been caused in shipping.

Note: Slightly bent panels and angle braces can be straightened and will cause no performance or assembly problems.

If any parts are missing or damaged, contact Global Finishing Solutions at 800-848-8738 and select option 8 to speak to a Technical Services Representative.

Sort parts by size

To help installation proceed more efficiently, sort all parts by size as you unpack them (Figure 3).

Each part has a specific part number. The part number is either etched into the part or printed on a label affixed to the part (Figure 4).



Figure 3: Panels sorted by size in preparation for assembly

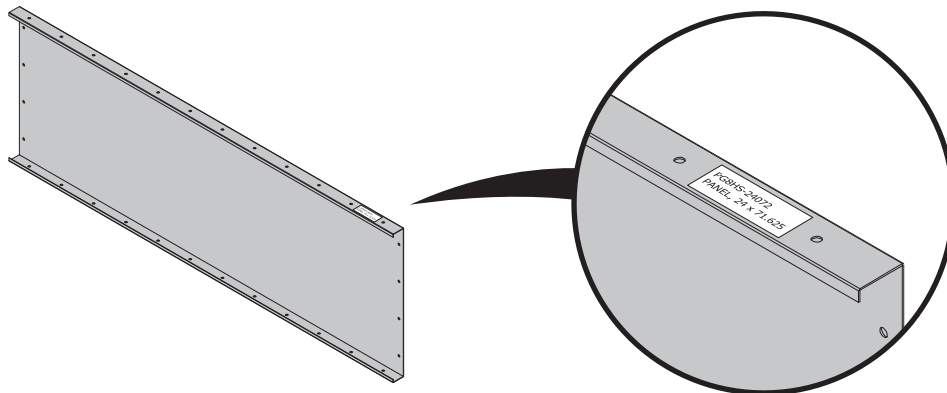


Figure 4: Example of a part number label

Remove protective coating

Some booth parts ship with a protective coating. For efficiency during installation:

- Remove the part number label from the part and set the label aside temporarily.
- Remove the blue protective coating from the part.
- Re-apply the part number label on the part. (Use tape to affix the label to the part, if necessary.)

Follow assembly guidelines

Follow these guidelines when assembling the booth:

- Assemble the booth in sections, following the sequence provided in this document.
- As you build each section, tighten the bolts only to finger-tight.
- Before tightening the bolts within a section, confirm that the section is plumb and square.
- When directed to do so, tighten the bolts within a section to *snug-tight*. Snug-tight is defined as “the tightness that is attained with a few impacts of an impact wrench or the full effort of an ironworker using an ordinary spud wrench to bring the plies into firm contact.” (RCSC 2014)
- **For dual-skin booths:** Orient panels and parts as shown on the assembly drawings.
- **For single-skin booths:** Orient panels so that each panel’s flanged side faces outward, and the non-flanged side faces the booth’s interior.
- **For all booths:** When applicable, orient bolts so that the bolt heads (and a washer) are on the booth’s interior and the threads are on the exterior.
- Use hardware as specified on the assembly drawings.
- Plumb the panels so that they are perpendicular to the floor. The sides of the booth must be parallel to each other.

Installation procedure

This procedure describes how to install a dual-bay Ultra XD or XS CTOF semi-downdraft booth with a BT air heater.

Booth installation sequence

Reference: Refer to the Assembly Instructions to complete the installation sequence outlined below:

1. Prepare the floor and mark the booth footprint with chalk lines.
 - If the floor is out of level by **1 inch or less** over the full length of the booth, continue to the next step. (You do not need to take any corrective action now because you will be able to correct for slope when you install the floor leveling components later in the procedure.)
 - If the floor is **more than 1 inch** out of level over the full length of the booth, shim or grout the floor as needed to get it within 1 inch of level. GFS does not provide shims.
2. Measure and mark the air heater footprint.

Note: The location where the air heater is placed must meet the following requirements:

 - The location must provide the required distance between the air heater and the inner edge of the floor channel.
 - The location must provide the required minimum clearance around the air heater.
3. Install the BT air heater.
4. Build and attach the discharge hood assembly to the top of the air heater.
5. Assemble and install the intake duct up to roof height.
6. Mark and position the four columns for the support frame. Each column will be secured to the floor with two expansion anchors.

Note: Do not anchor the columns until the trusses are installed.

Note: GFS does not supply the anchors.

Note: Position the two rear columns first and then the two front columns.

7. Install the floor channel:
 - a) Install the floor outer profiles.
Note: Do not install floor profiles at the curtain or product door location(s).
 - b) Anchor the floor outer profiles to the building floor.
 - c) Install and level the panel leveling profiles.
8. Install a truss between the two rear-most columns. Shim and grout the columns as necessary.
Note: This truss will have cover skins. Install the truss cover skins on the truss prior to attaching it to the columns.
9. Install a truss between the two front-most columns. Shim and grout the columns as necessary.
Note: This truss will have cover skins. Install the truss cover skins on the truss prior to attaching it to the columns.
10. Install the center truss, which runs front-to-back.
11. Build the rear exhaust yoke and attach to the back side of the rear truss.
12. *If applicable:* Build a solid end wall.
13. Install the side wall panels:
 - a) On the side of the booth with the air heater, begin installing approximately 15 feet of the vertical panels (working from the front of the booth to the rear).
 - b) Field measure from the front of the booth to the front edge of the discharge hood.
 - c) Cut the hole in the plenum panel and assemble on top of the wall panels and attach to the discharge hood.
 - d) On the opposite side of the booth, begin installing approximately 15 feet of vertical panels and plenum panels (working from the front of the booth to the rear).
 - e) Ensure that the side walls are plumb, square, and level.
14. Build the front wall of the booth.
Note: Affix the branding decal to the header panel prior to installation. If there is more than one header panel, the branding decal should be located on the right-hand side of the right-most panel when you are looking at the front of the booth.

15. Install the roof support beams, attaching them to the center truss and the completed portion of the side walls.
16. Finish installing any remaining side wall panels on both sides of the booth, including the plenum panels.
17. Install the exhaust fan and remaining exhaust duct up to roof height.
Note: Install two pieces of duct before the fan; if there is not enough room, place the fan outside.
18. Install the roof panels.
Begin installing the panels at the rear of the booth, then work toward the front.
19. *If applicable:* Install the GFS AdvanceCure[®] motor boxes and motors.
Note: Do not wire.
20. Install the hip light panels:
 - a) Attach the side light panels and mounting brackets.
 - b) Attach the center light panels and mounting brackets.
21. Install the filter ceiling panels.
Note: Do not install the filter racks or the intake filters during this step.
Note: In the ceiling at the rear of the booth, install only the panel with the AdvanceCure[®] return air grill. If the booth does not include the optional AdvanceCure system, install the GFS AdvanceCure cover kit.
22. *If applicable:* Install intake and discharge AdvanceCure ductwork.
23. *If applicable:* Install all AdvanceCure towers.
24. Install the discharge plenum diffuser.
25. Install the light fixtures and light cables.
26. Install remaining solid ceiling panels.
27. Install the personnel door(s).

28. Install the product door frame(s).
 - *If applicable:* Install the track and brackets for the frontal curtains.
Note: Do not install the curtain during this step.
 - *If applicable:* Install the product door(s):
 - a) Install the outer hinges and locking rods.
 - b) Place the door hardware on the door slabs.
 - c) Attach the outer door slabs to the door frame.
 - d) Install the center door slabs.
 - e) Make sure all doors are level and plumb.
29. *If applicable:* If the booth has center divider curtains, install the track and brackets.
Note: Do not install the curtain during this step.
30. Install the operator interface terminal.
31. Install miscellaneous electrical devices:
 - Temperature sensor
 - Air-sensing tube
 - *If applicable:* Damper actuators
 - Air solenoid valve
 - Economy valve
 - Air-proving switch for the exhaust stack
 - Puff switch
32. Secure the wall panels to the floor profile.
33. Complete the installation of intake and exhaust stacks.
Note: The roofing contractor must cut the openings in the roof and seal around the ductwork.
34. Caulk the booth.
Do not caulk between fixed roof panels and explosion-relief panels. Caulking the explosion-relief panels will inhibit operation of the explosion-relief system.

35. Use a vacuum to clean out the exhaust yoke, intake plenum, and air heater (intake and exhaust side) of any debris.
36. *If applicable*: Install the frontal and center divider curtains on their tracks.
37. Install booth filters:
 - a) Install the intake filters into the filter racks.
 - b) Install the filter rack in the ceiling of the booth.
 - c) Install the GFS Wave[®] filter media in the exhaust yoke.
38. Allow contractors to perform electrical hookup, plumbing/piping, and roof work, as needed.

Perform commissioning and startup

Prerequisites:

- The booth must be fully assembled and caulked.
- The air heater must have been vacuumed or swept out, and the air heater filters must already be installed.
- An electrician must have completed the electrical hookup.

Note: A trained GFS Distributor usually performs booth startup. The person who performs booth startup is responsible for completing the Final Commissioning Document and returning a signed copy to GFS.

Reference: Refer to the Final Commissioning Document. (For information on locating the Final Commissioning Document, see Table 3 on page 13.)