



**GLOBAL
FINISHING
SOLUTIONS**

GRATE LIFTING TOOL ASSEMBLY INSTRUCTIONS

You will need the following tools (not provided) to assemble the Grate Lifting Tool:

- 7/16" wrench
- 7/16" socket wrench
- 15/16" wrench
- 15/16" socket wrench

Follow these steps along with the Assembly Diagram on the backside of this document:

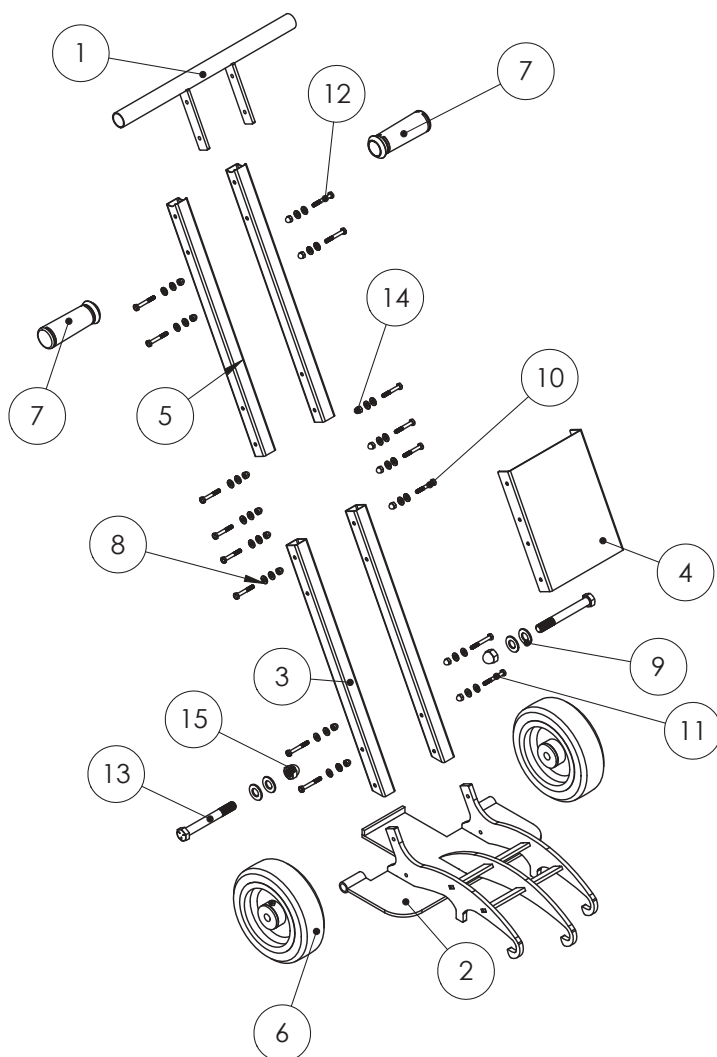
1. Unpack and organize the hardware, making sure you have all components listed in the part number table.
2. Take one bottom tube (3) and one upright tube (5) and fit together with the faceplate (4) so the holes are aligned.
3. Secure the faceplate (4) to the tube using a 1/4" - 20 acorn nut (14) and a 1/4" SAE washer (8) on the inside of the tube, fastened to another 1/4" SAE washer (8) and a 1/4" - 20 x 1 3/4" hex head screw (10) on the outside of the faceplate (4). Repeat this process for each of the four connection points.
4. Repeat steps 2 and 3 to connect the other bottom tube (3) and the other upright tube (5) to the opposite side of the faceplate (4).
5. Insert the handle weldment (1) into the upright tube (5) and secure the components in the same manner using a 1/4" - 20 acorn nut (14), two 1/4" SAE washers (8) - one on either side of the tube - and a 1/4" - 20 x 1 3/4" hex head screw (12) for each of the four holes.
6. Slide one handle grip (7) onto each side of the handle weldment (1).
7. Using a 5/8" - 11 x 5 1/4" hex head screw (13), two 5/8" SAE washers (9) and a 5/8" - 11 acorn nut (15), attach one wheel (6) to the base weldment (2). Split the washers so that one is on the exterior part of the wheel (6) and the other is next to the acorn nut (15). Tighten the hex head screw (13), making sure the wheel (6) is able to turn.
8. Repeat step 7 for the other wheel (6).
9. Slide the bottom tube (3) onto the base weldment (2) until the holes are aligned. Secure using a 1/4" - 20 acorn nut (14), two 1/4" SAE washers (8) and a 1/4" - 20 x 2" hex head screw (11) for each of the two holes.
10. Repeat step 9 to attach the other bottom tube (3) to the base weldment (2).

GFS Part No:
1082533





**GLOBAL
FINISHING
SOLUTIONS**



Item No.	GFS Part No.	Description	Qty
1	GFS-104-S1	Handle Weldment	1
2	GFS-104-S2	Base Weldment	1
3	GFS-101B-4	Bottom Tube	2
4	GFS-104-6	Faceplate	1
5	GFS-101B-8	Upright Tube	2
6	2336T13	8" x 2-1/2" Wheel	2
7	97065K168	Handle Grip	2
8	90126A206	1/4" - SAE Washer	32
9	90126A212	5/8" - SAE Washer	4
10	91247A548	1/4"-20 x 1-3/4" Hex Head Screw	8
11	91247A550	1/4"-20 x 2" Hex Head Screw	4
12	92865A154	1/4"-20 x 1-7/8" Hex Head Screw	4
13	92865A182	5/8"-11 x 5-1/4" Hex Head Screw	2
14	98858A101	1/4"-20 Acorn Nut	16
15	98858A105	5/8"-11 Acorn Nut	2

If you require replacement parts for the Grate Lifting Tool, please contact GFS at 800-848-8738 (option 2) or parts@globalfinishing.com.